



# Unify

An enterprise platform for automated solutions  
to achieve efficiency, quality and control

# Unify

## An enterprise platform for automated solutions to achieve efficiency, quality and control

The business and regulatory environment is placing greater demands on Insurers actuarial modeling, finance and risk analytics departments.

They require richer and deeper analysis that is quicker and more frequent, and subject to strict governance and controls. Insurers also face an economic environment that is demanding substantial reductions in overhead as margins are squeezed and all budgetary spending needs justification.

This creates a challenge that demands change. Simply throwing in more resources would increase costs significantly and, more importantly, fail to address the whole problem. Insurers need to study the entire process from end-to-end and consider the multiple systems and the manual steps to move data among them:

- Ad hoc calculations and other manual processes
- Actuarial interventions and governance reviews
- The cost of errors and repeat work

Only a holistic approach, with the ability to bring change across the entire process can deliver the transformation required whilst saving time and reducing costs, all while maintaining strict overall control.

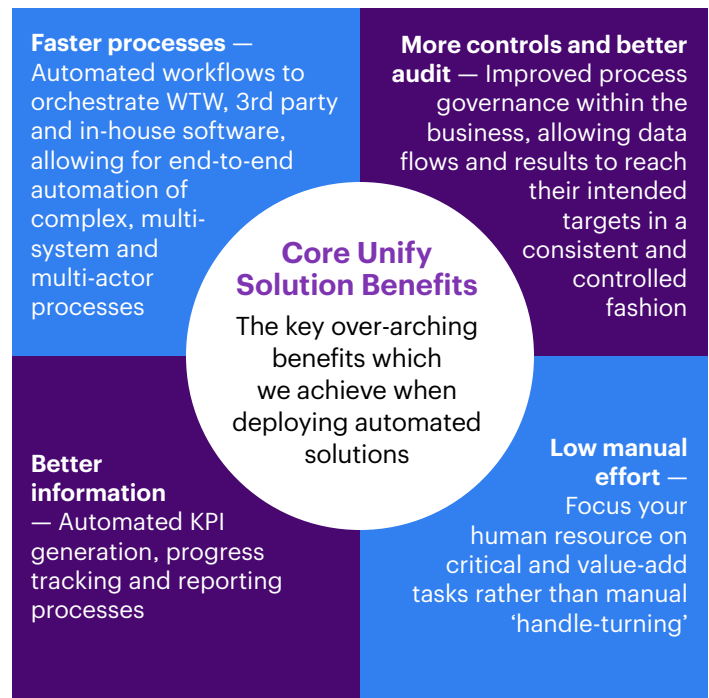
Such an approach works with any existing system to provide automated governance and workflow orchestration to manage and automate an end-to-end process. The result: richer and deeper analysis, delivered faster, for less.

Unify transforms your risk, finance, and actuarial operations, enabling enhanced productivity, accelerated performance, precision and control across all functions.

## A transformational solution

Unify will deliver numerous tangible benefits to your company. The platform provides exceptional capabilities for automation, integration, and governance to enable your company to rise to a higher standard of performance in risk, finance and capital management.

Unify will enable your company to fundamentally change your financial modeling, reporting and financial process by implementing a comprehensive integration, automated process management and governance solution. This will allow your staff to spend less time on routine production tasks and more time using the results to deliver value-added insight and competitive advantage to business stakeholders.



# 50-80%

typical reduction in process execution time



# 6-24

months typical payback period



# 100+

companies and their subsidiaries license Unify globally



## What is Unify?

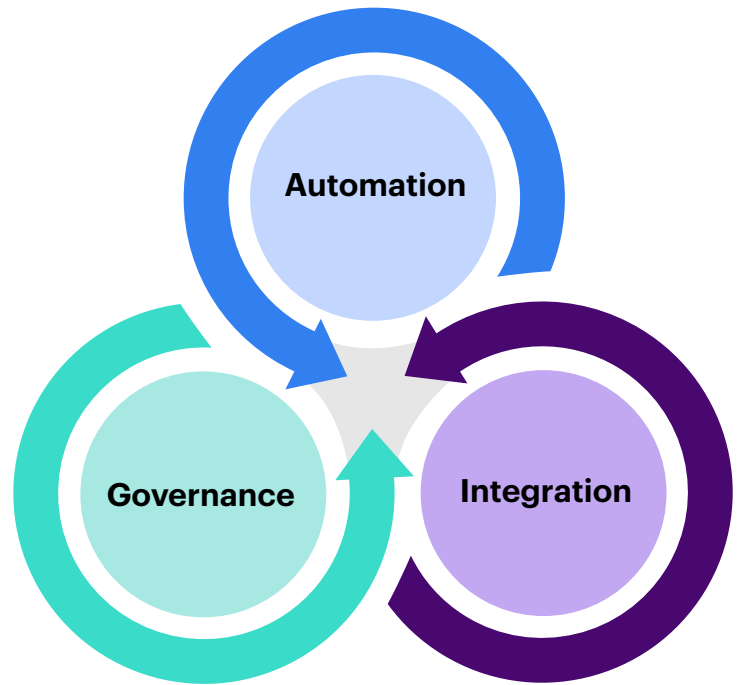
Unify is our award winning platform that combines **Automation, Governance, and Orchestration** capabilities. It is the driving force behind our range of solutions, designed to enhance operational efficiency and streamline processes. Unify allows for flexible deployment options: you can integrate it into your existing architecture or we can host it for you via **Software as a Service**.

- Provides **automation** of flexible, user-defined workflows to run these integrated solutions.
- Enables **integration** with WTW solutions and third-party software.
- Supports **governance**, including security process review and approval, version control and process audit trails.

---

With Unify, your risk, finance and actuarial functions will be empowered to accomplish more in less time and at a reduced cost.

---



# Automation

Financial modeling, finance and reporting processes typically include many steps involving software calculations, user review, interactions and approval



With Unify, our **Web Workflow Designer** enhances user experience and efficiency, allowing seamless creation and modification of workflows through a user-friendly interface and "drag and drop" functionality, all without

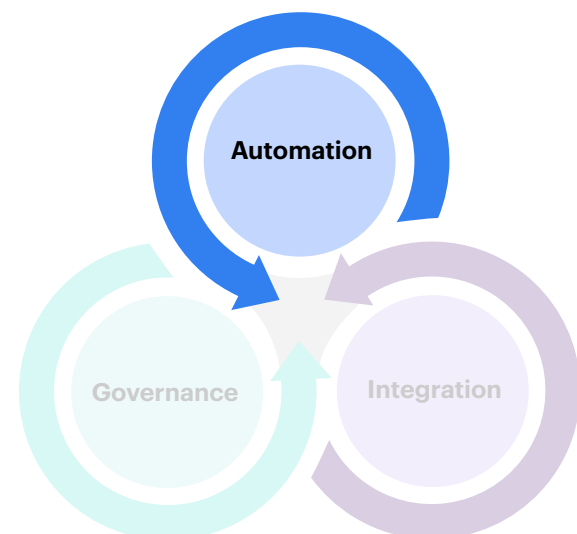
requiring desktop components. It ensures accuracy with immediate validation and error detection, cutting down revision time. The designer stands out for its scalability and ability to tailor workflows with custom activities, ensuring it meets diverse business needs while aligning with your specific operational goals.

---

**Our Web Workflow Designer allows you to create, automate and execute your complex business processes at the press of a button.**

---

Your complex business processes can be executed at the press of a button and this button-press can even be replaced with sophisticated scheduling capabilities. This allows your workflows to start automatically, either at a single predefined future date, repeatedly at regular intervals between two predefined future dates, or by repeatedly checking a file location for delivery of one or more files.



The workflows established within Unify have the capability to be initiated via the system's open application programming interface (API), allowing integration with various external systems and scheduling tools already implemented in your business. This is further enhanced by the system's compatibility with widely-used tools such as Python and Excel, offering ready-to-use integrations. Additionally, these workflows can be configured to mandate oversight and action at crucial points by designated personnel. This process includes conditional checkpoints where interaction is only necessary if certain pre-set criteria are achieved, ensuring a balanced combination of automation and administrative control.

The Unify web-based interface provides a clear indication of what workflows are running, what is scheduled and system load. Individual workflow updates are provided in real-time directly through the user interface, charting progress through tasks, with interim deliverables available for inspection.

Graphical displays, along with automated user notifications, such as through email, present progress against predetermined milestones and projections of expected completion times. This allows for remediation and serves as invaluable input for future process improvement.



**Execution Agents** are at the forefront of Unify's innovative approach in the software landscape, serving as the robots responsible for task execution. Unlike conventional systems that tie a whole

process to a single execution agent, Unify provides scalability by intelligently allocating sub-tasks across multiple available agents. This unique approach ensures optimal utilisation of resources, preventing idle time, and leading to faster, more efficient task completion.

# Integration

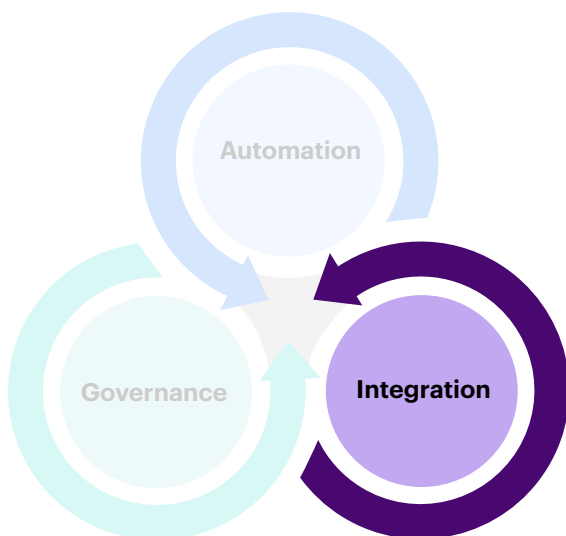
Many companies have deployed a variety of software applications and tools into their financial modelling, finance and reporting processes, bringing together an often inefficient group of systems that struggle to integrate with each other. Unify supports flexible integration to bring together a wide variety of software solutions and tools to help you solve this issue. By joining your financial modeling, finance and reporting applications, your company can step into a new world of tightly integrated, efficient reporting processes.

---

**Unify supports flexible integration to bring together a wide variety of software solutions and tools.**

---

Unify connects effortlessly with WTW's software suite. Our comprehensive portfolio of software products and tools provide a solution at each stage of the risk, finance and reporting process. Partnering these products with Unify means we're able to offer you a complete end-to-end risk reporting solution. It is also able to seamlessly integrate with third-party tools. It supports command line executable runs and offers Application Programming Interface (API) connections to external systems, enhancing its interoperability. Additionally, Unify provides "out of the box" integrations with widely-used tools including Python, PowerShell, SSIS, and Excel, ensuring a comprehensive range of functionality is readily accessible.



## Technology and software solutions suite

We help transform insurance companies by combining leading-edge technology solutions and deep insurance industry experience.

### Business Process Excellence



#### Unify

Process automation, integration and governance



#### DataValidator

Automated data validation

### Advanced Analytics, Decision Support, Delivery



#### Radar

Analytical pricing, claims and underwriting platform

### Financial Modelling and Capital Modelling, Reserving



#### ResQ

P&C reserving



#### ResQ Financial Reporter

P&C financial reporting



#### Igloo

P&C financial and capital modeling



#### Risk Agility Financial Modeler

Life financial modeling



#### Risk Agility Economic Capital Aggregator

Life capital modeling



#### Risk Agility Proxy Modeller

Life proxy modeling



#### IFRS17 Calculation Engine

Implementation of IFRS17 standard

# Governance

An insurer's financial modeling, finance and reporting process require proper governance protocols as part of its compliance with global and regional regulatory requirements. Unify helps you leverage your investment in developing these governance protocols and more readily implement them in everyday business practices.

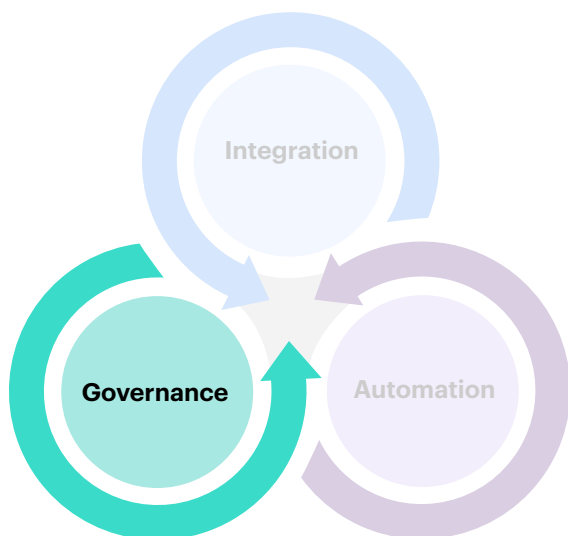
User authentication for all activities in the system is defined through Active Directory, providing for enterprise-wide access control. Role-based permissions can be defined to create a custom security and access framework. All objects persisting in the system are locked down and any changes automatically versioned, with all versions maintained and accessible within the system.

Audit logs are continually updated with all key user actions for audit and accountability, and include details of any changes to objects stored in the system. Additionally, each workflow that is run within Unify creates a detailed audit report of the activities performed along with the inputs to and outputs from those activities. Included with these audit reports are the native audit files and logs from underlying systems that are run as part of a workflow.

---

**Our Unify Web UI & Repository is a secure, web-based platform featuring robust access controls, a customizable dashboard, and a comprehensive audit trail for all repository items, viewable within the Web UI. It ensures data integrity with automatic version control and enables extensive customization and management through a comprehensive API. Users can also monitor current workflows and associated Management Information in real-time, enhancing transparency and informed decision-making.**

---



Tailored governance protocols, including user reviews, approvals and other user interactions can be designed into workflows. Requests for interactions can be directed to individuals or Active Directory groups, with each group member receiving a notification that an action is required.

Conditional workflows can be designed around user responses to interactions, with different paths followed through the workflow depending on the specific response received. The approved or not-approved response to the use of data added to the system as part of a previous workflow step is a good example of this. All user interactions are subject to the same level of transparency and audit readiness as other tasks. These capabilities enable you to incorporate best practice governance into highly automated processes.



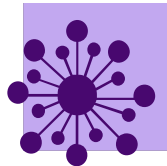
**Unify includes DataValidator, providing you with integrated data validation capabilities to ensure accuracy and consistency**

DataValidator is a flexible and user-friendly software solution that enables your company to validate, cleanse and transform your data, efficiently preparing it for use in financial modelling and reporting processes. The software helps you to quickly implement validation, cleansing and transformation rules, and captures all relevant audit information to produce full audit-trails necessary for strict audit control and governance.

The Unify experience is significantly enriched through its integration with our DataValidator solution, seamlessly becoming a pivotal part of any business process. This integration not only streamlines operations but also introduces a high degree of automation, enabling the immediate use of check results within workflows to make logical decisions without the need for manual user intervention. This capability ensures a more efficient and error-free process, enhancing the overall performance and effectiveness of your workflows. Furthermore, the DataValidator's batch running capabilities, combined with its substantial processing power, contribute to a faster, more reliable experience, ensuring that large volumes of data can be handled with ease and precision. Together, Unify and DataValidator create a synergistic effect, driving operational excellence.

# Propositions

The core areas in which WTW work to deliver robust and cutting edge solutions to our clients with Unify



## Complex Process Orchestration & Control

We are experts in designing, building and re-engineering complex financial processes for our clients. Our unique blend of people, process and technology allows us to help you automate business critical processes, thereby increasing efficiency and control. Our propositions listed below can be considered as specific instances of this over-arching proposition.

**Ultimately, Unify can integrate and control all key components of any desired financial process.**



### Best-in-Class Life Cashflow Systems

We provide holistic end-to-end (E2E) cashflow systems to our various clients to fully & holistically orchestrate, govern and control their full actuarial valuation process; from data preparation & assumptions through to effective modelling to extraction & reporting.



### Pricing Process Automation

We are heavily invested in ensuring that we can offer best-in-class automated pricing systems to our clients. Such systems mean that more information can be delivered earlier in a robust fashion, ultimately providing better insight into selections and drivers of results.



### Automated Capital Modelling

We offer a range of automated solutions to help our clients effectively understand their solvency position, across both the Life and P&C space. Our solutions offer flexibility and scalability, ensuring you receive robust & timely key capital sensitivity information.



### Automated P&C Reserving

We continually look to improve P&C reserving functions by providing automated reserving solutions to our clients. These solutions ensure that reserving functions can efficiently generate regular and valuable insights, which are integral to company-wide decision making.



### IFRS 17 Enterprise Solution

We have developed a powerful solution which covers all regulatory processing aspects of IFR S17. This solution helps our clients meet the regulatory requirements of IFR S17 across both Life and P&C, with the solution able to be modularised to fit specific client needs.

## Unify Learn: Your gateway to expert resources and training for an enhanced user experience

Unify Learn serves as a comprehensive online learning hub, meticulously curated with articles, videos, and training courses, all crafted by WTW Unify experts to optimize your use of the software. This expansive platform hosts a wealth of 'best practice' articles, alongside numerous technical deep-dive videos, providing you with valuable insights and guidelines. Enhance your skills with our free online training courses, specifically designed to assist in tailoring your workflows to perfection. Gain secure access directly through your Unify environment, and take advantage of the opportunity to participate in our engaging Unify webinars.

For additional support and resources, you'll find convenient, linked access to our support portal, ensuring you have all the tools you need at your fingertips.

## Select the ideal deployment option for your needs

Unify offers deployment flexibility to cater to diverse organisational needs. Clients have the option to install the software on-premise in their own cloud instance, maintaining direct control over their infrastructure and data. Alternatively, Unify can be deployed as a Software as a Service (SaaS) solution, fully managed and hosted by WTW, providing a hassle-free experience with the reliability of expert management. This dual approach ensures that Unify can seamlessly integrate into any IT environment, offering tailored solutions that best align with the unique requirements and preferences of each client.

### Contact:

#### Max Drannikov

Global Proposition Leader

[Max.Drannikov@wtwco.com](mailto:Max.Drannikov@wtwco.com)

#### Kunal Patel

Unify Sales Director

[Kunal.Patel@wtwco.com](mailto:Kunal.Patel@wtwco.com)

#### Tom Beasley

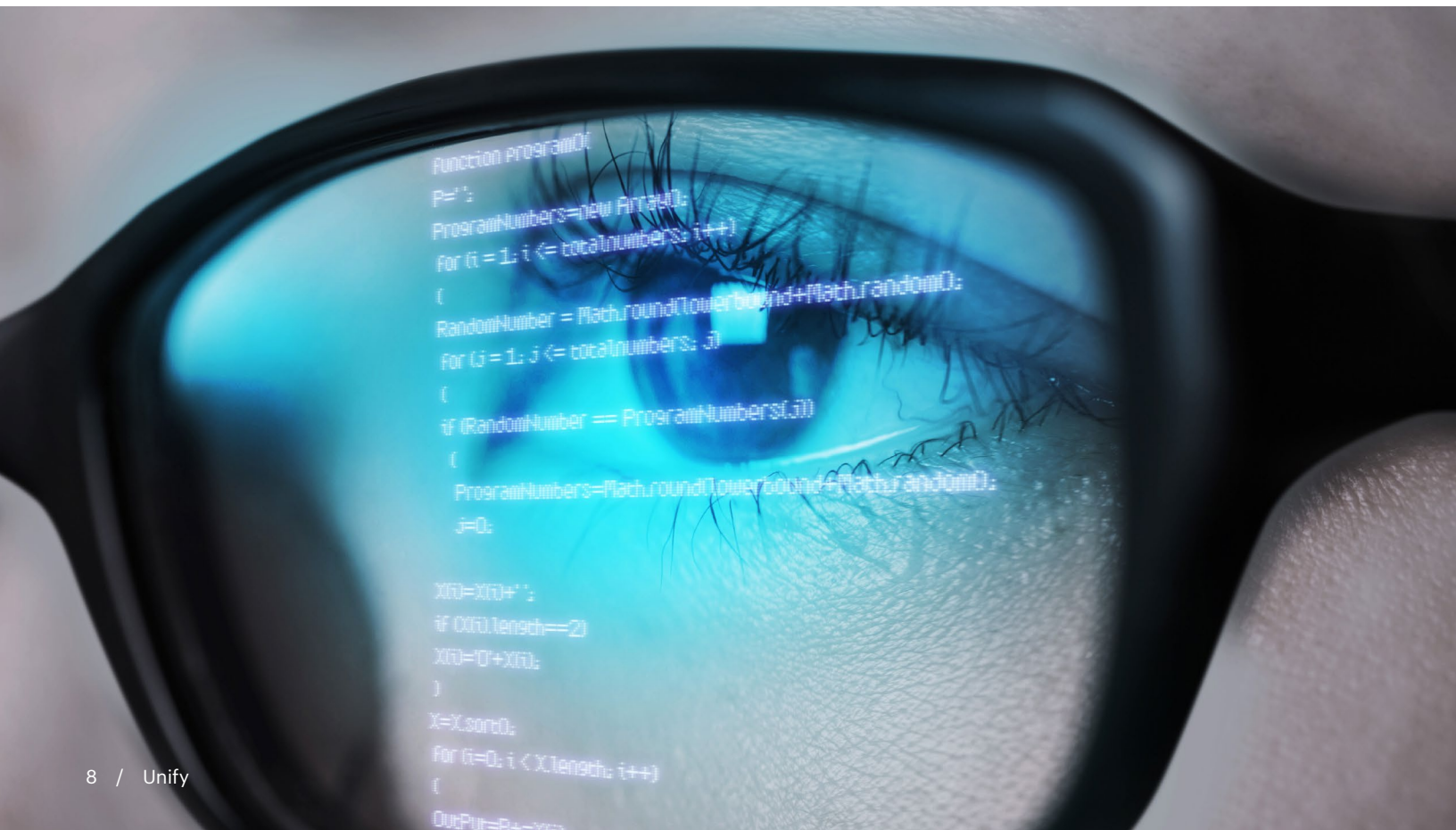
Global Implementation Lead

[tom.beasley@wtwco.com](mailto:tom.beasley@wtwco.com)

### For more information

Visit: <https://www.wtwco.com/engb/solutions/products/unify>

[software.enquiries@willistowerswatson.com](mailto:software.enquiries@willistowerswatson.com)





### About Insurance Consulting and Technology

WTW's Insurance Consulting and Technology business serves the insurance industry with a powerful combination of advisory services and leading-edge technology. Our mission is to innovate and transform insurance, and we deliver solutions that help clients better select, finance, and manage risk and capital.

We work with clients of all sizes globally, including most of the world's leading insurance groups. Over 1,000 client companies use our specialist insurance software on six continents. With over 1,700 colleagues in 35 markets, we continually strive to be a partner and employer of choice to the insurance industry.

### About WTW

At WTW (NASDAQ: WTW), we provide data-driven, insight-led solutions in the areas of people, risk and capital. Leveraging the global view and local expertise of our colleagues serving 140 countries and markets, we help you sharpen your strategy, enhance organizational resilience, motivate your workforce and maximize performance. Working shoulder to shoulder with you, we uncover opportunities for sustainable success — and provide perspective that moves you. Learn more at [wtwco.com](https://www.wtwco.com).



[wtwco.com/social-media](https://www.wtwco.com/social-media)

Copyright © 2023 WTW. All rights reserved.  
WTW-127400/10/23

[wtwco.com](https://www.wtwco.com)

