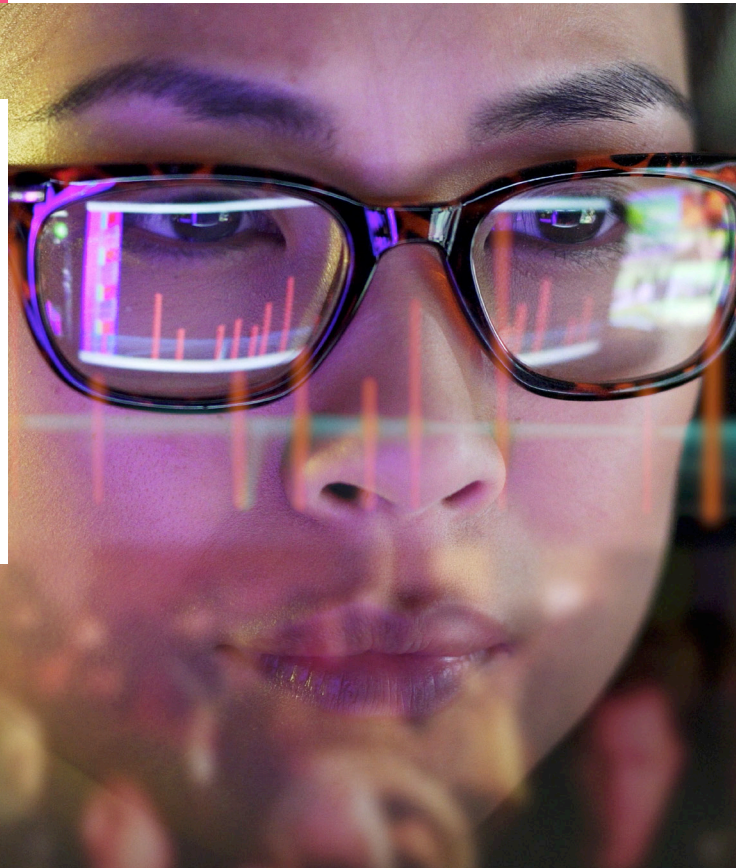


# WTW Advanced Claims Package

Workers' compensation reporting application



## Introducing WTW's Advanced Claims Package

The Advanced Claims Package (ACP) is WTW's proprietary workers' compensation reporting and analysis application. It provides a concise, user-friendly, visual illustration of workplace injury trends across an entire workforce inclusive of all departments, functions, and geographies.

Our ACP provides a fundamental starting point for the development and implementation of work injury prevention and mitigation measures, as well as assessing overall claim costs.

Employers are facing increasing regulatory pressure to implement effective safety management strategies and procedures in order to reduce the frequency of work injury claims. This, coupled with the increasing costs of medical expenses, means the main challenge for employers to reduce the amount of claims is to identify and understand key drivers that result in high frequency and high cost claims.



The ACP application can analyse:

- Claims frequency
- Claims severity
- Location of claims
- Job description
- Type of claim
- Cause of claim
- Nature of injury
- Body part injured
- Medical expenses
- Weekly benefit expenses
- Reporting lag time



Through a comprehensive understanding of the claims drivers, companies are better positioned to develop and implement more effective safety strategies and procedures, which can be targeted towards high-risk exposures and at a minimum should include:

- Applicable safety management structures
- Work safety risk assessments
- Effective safety promotion and training
- Appropriate safety committee priorities
- Accident and incident reporting
- Safe work methods and procedures
- Targeted safety audits and inspections
- Suitable contractor safety management
- Correct safety rules and regulations
- Emergency preparedness and response.



**Simplified structure:** As shown in Figure 2 overleaf, ACP dashboards and reports are structured to provide a high-level snapshot of workers' compensation exposures, in graphic and tabulated format, as well as facilitating a more detailed analysis of claim parameters if required.



**Reporting flexibility:** WTW can generate ACP reports on a frequency that accords with your needs.



**Dynamic visual presentation:** ACP dashboards and reports present claims data in a visually dynamic format for easy referencing, data segmentation and trend monitoring.



**ESG diligence:** The ACP analysis application assists organisations in fulfilling ESG responsibilities by ensuring social obligations such as employee safety controls are continually monitored and improved.



**Entry point to advanced analytics and loss forecasting:** The ACP analysis application provides an entry point to more detailed work injury analytics and loss forecasting services available through the Risk and Analytics team at WTW.

## Why should you use ACP?



**Enhancing work injury claims performance:** As illustrated in Figure 1 below, organisations that use workers' compensation analytics are better positioned to improve the effectiveness of their safety strategies. The below graph provides an example of improved safety performance following the application of enhanced safety strategies, based on a detailed analysis of workplace accidents.

Figure 1: **Lost-time injury results using work injury claims data to improve safety strategies**

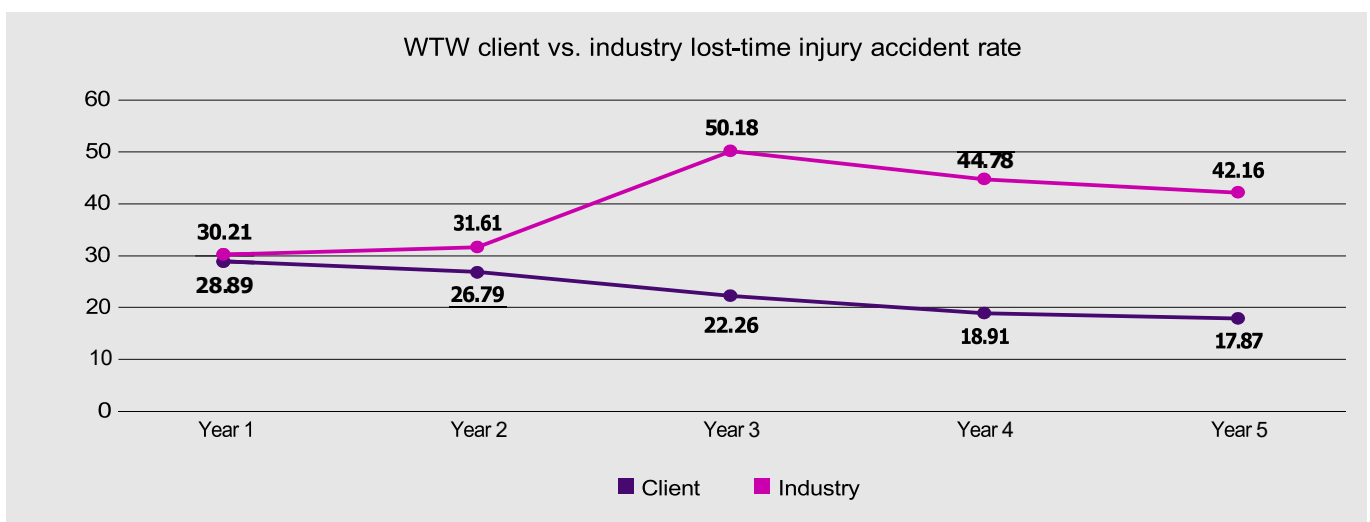
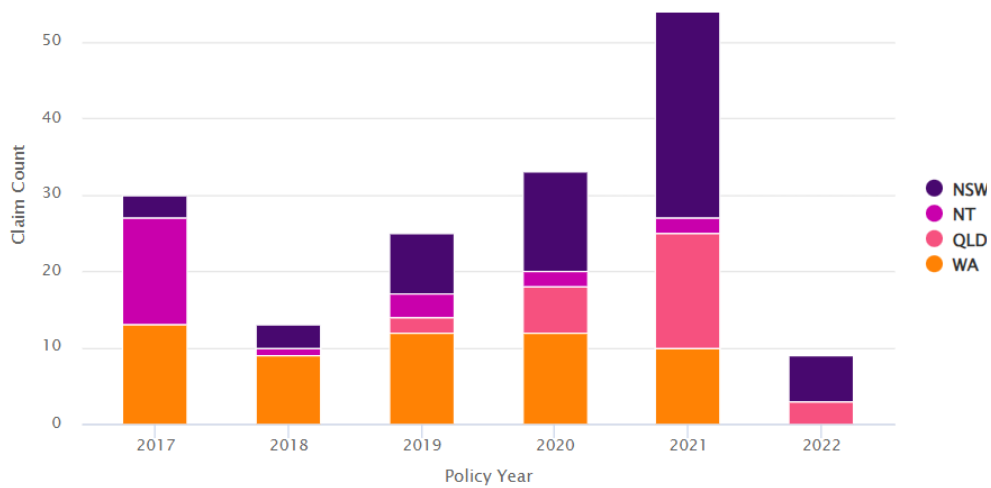
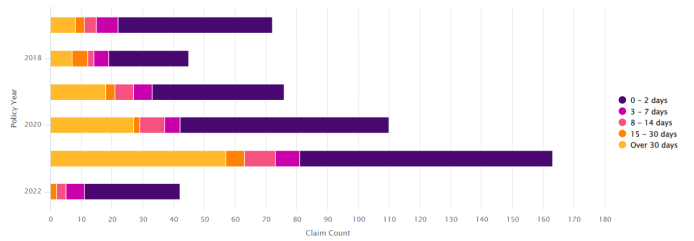
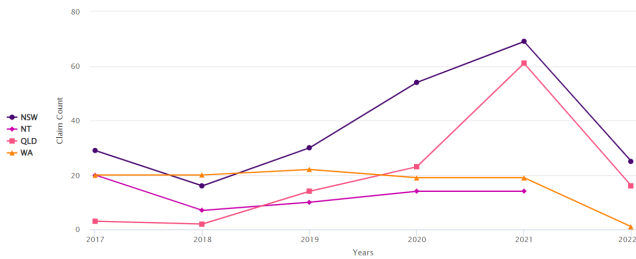
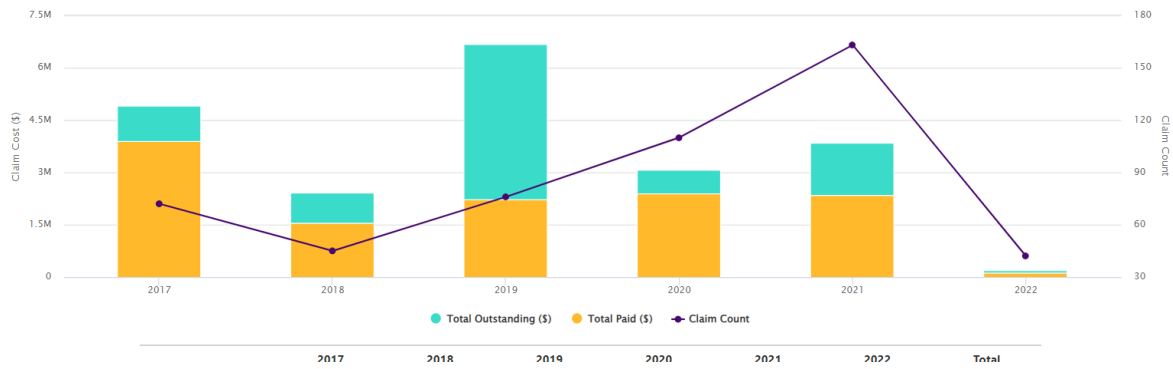


Figure 2: ACP dashboards and reports



### Further information

For further information regarding the above service, please contact your consultant or [workplace.risk@willistowerswatson.com](mailto:workplace.risk@willistowerswatson.com)

**Disclaimer:** While all reasonable skill and care has been taken in preparation of this document, it should not be construed or relied upon as a substitute for specific advice on your insurance or consulting needs. No warranty or liability is accepted by the WTW company/s named, their shareholders, directors, employees or other affiliated companies, for any statement, error or omission.

Willis Australia Limited | ABN 90 000 321 237 | AFSL No. 240600  
 CKA Risk Solutions Pty Ltd | ABN 33 109 033 123 | AFSL No. 276915

### About WTW

At WTW (NASDAQ: WTW), we provide data-driven, insight-led solutions in the areas of people, risk and capital. Leveraging the global view and local expertise of our colleagues serving 140 countries and markets, we help you sharpen your strategy, enhance organizational resilience, motivate your workforce and maximize performance.

Working shoulder to shoulder with you, we uncover opportunities for sustainable success—and provide perspective that moves you.



[wtwco.com/social-media](https://www.wtwco.com/social-media)

Copyright © 2023 WTW. All rights reserved.  
 WTW-897-AU

[wtwco.com.au](https://www.wtwco.com.au)

