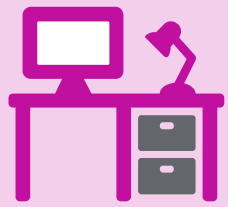


U.S. workers applaud employers for protecting and supporting them during pandemic



70% of employees report feeling comfortable working onsite*

Employees indicate employer support during pandemic

67%
Helped them be productive



66%
Kept them safe from COVID-19

58%
Supported their wellbeing

*Only for employees who are allowed to work onsite; percentages indicate "comfortable" or "very comfortable."

Employer support had positive impact on employee engagement and retention



	Employees who feel safe and comfortable at work	vs.	Employees who don't feel safe and comfortable at work
Intend to stay with employer for at least 2 years	84%		42%
Say they are highly engaged	51%		5%

Employees differ on safety requirements for onsite workers



	Support	Oppose
Vaccine mandates	58%	22%
Wearing masks indoors	65%	15%
Regular testing to enter worksite	54%	21%

At companies with vaccine mandates:

➔ **72%** support them and **10%** oppose them

At companies without mandates:

➔ **37%** support them and **40%** oppose them



Actions you can take now!

- Make accommodations for employees suffering from long COVID-19 by providing reduced hours, time off and job restructuring
- Ensure your disability carrier is reviewing and evaluating claims for long COVID-19 sufferers
- Prioritize making employees feel safe and comfortable at work
- Support employees who choose to follow extra safety precautions to protect themselves and their families after mandates end
- Continue to monitor COVID-19 risk in the community and be prepared to reimpose safety requirements as necessary

Lingering effects of long COVID-19

1 in 4 employees report having had COVID-19



37% of those who had COVID-19 still experience long-term effects



Long COVID-19 sufferers experience:



2x the number of missed workdays as those who have not had COVID-19



Greater levels of **depression or anxiety**

Source: 2022 Global Benefits Attitude Survey

About the survey: A total of 9,658 U.S. employees from large and midsize private employers participated in the survey, which was conducted during December 2021 and January 2022.

Copyright © 2022 WTW. All rights reserved.

wtwco.com

wtw